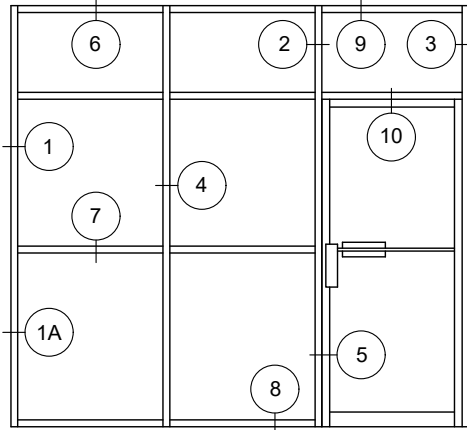




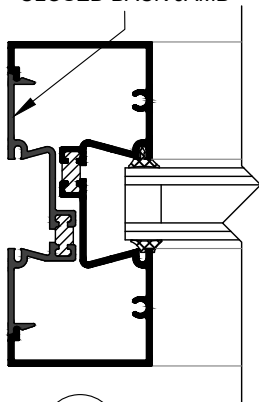
200 SERIES FLUSHLINE DETAILS

B6

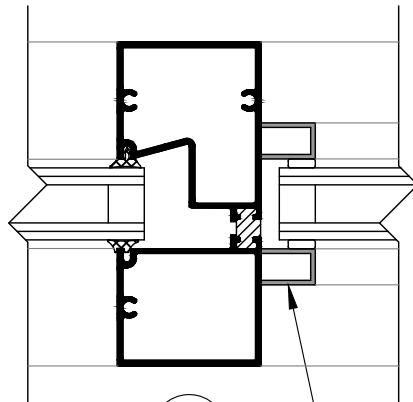


- Thermally improved 2" (50) x 4 1/2" (114) flush glazed storefront and entrance framing system for sealed unit glazing.
- Offers a narrow 2" (50) sight line and is compatible with all Desa entrance door packages, T/B and non T/B type.
- This system utilizes a two piece split mullion design with screw spline joinery for easy fabrication.
- Shear block joinery is required at the tubular door jambs and provides the extra strength required at the entranceway.
- Energy efficient pour and debridge thermal improvement design is incorporated in all extruded sections.
- Extruded thermally improved sub-sill flashing has been specifically designed and is recommended for all window installations.
- Optional two part thermally improved deflection header provides easy install of frame, and also meets the need to permit any deflection above the opening.
- Clear and bronze anodized finishes are standard. Other finishes are optional.

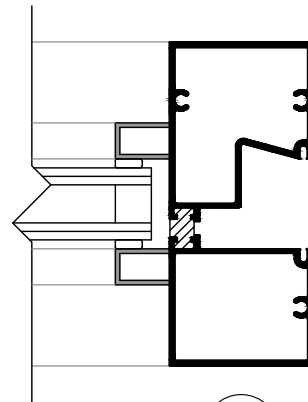
OPTIONAL FILLER FOR CLOSED BACK JAMB



1

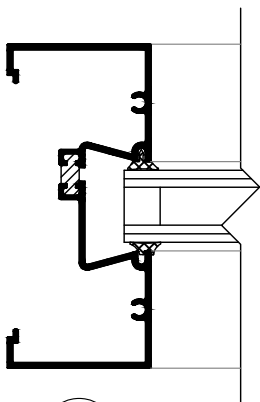


2

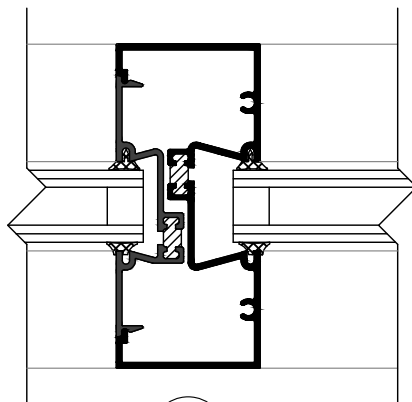


3

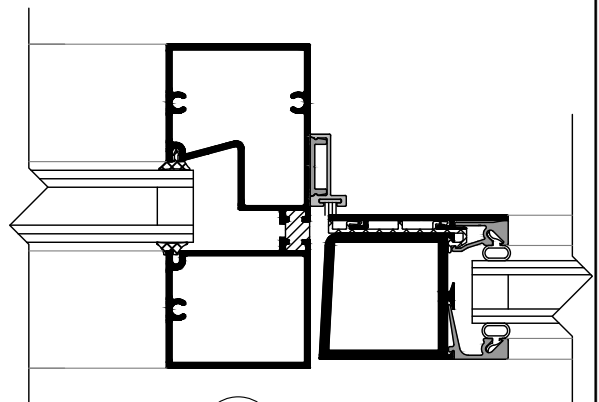
SCREW APPLIED VERTICAL STOPS ON TRANSOM



1A



4



5

Clearly Exceptional

Providing innovative solutions that meet client needs | desa.ca