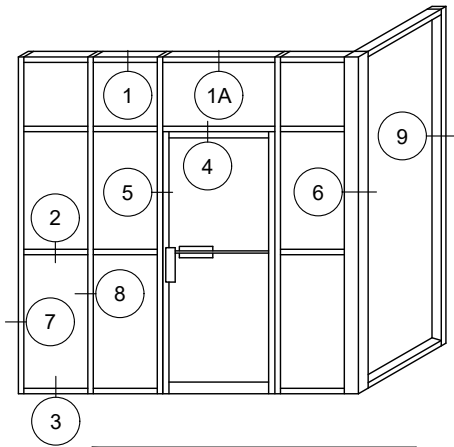


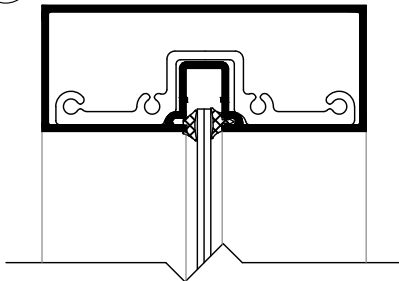


# 175 SERIES FLUSHLINE DETAILS

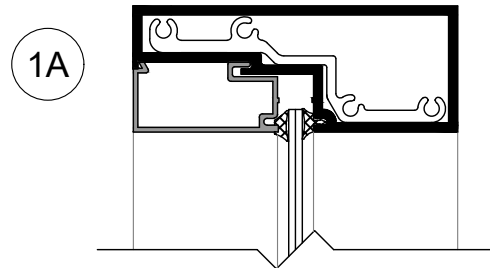
B2



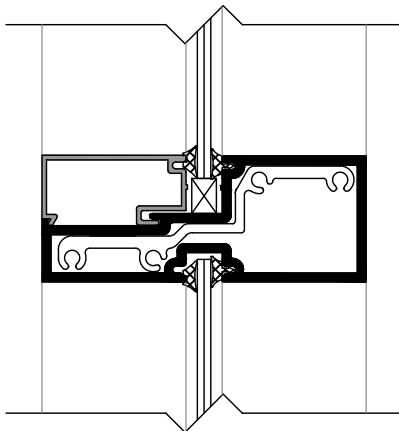
- 1 3/4" (45) x 4 1/2" (114) storefront and entrance framing system for single glazing.
- Offers a narrow 1 3/4" (45) sightline and is totally compatible with the Desa 100, 350 and 500 series entrance door packages.
- This system is primarily used for interior and vestibule conditions and offers a 90 degree corner post which allows for easy vestibule design and layout at the interior of main entrance areas.
- Tubular profiled extrusions with shear block joinery.
- Clear and bronze anodized finishes are standard. Other finishes are optional.



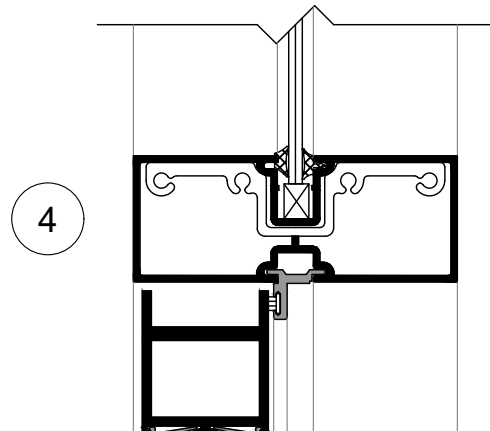
1



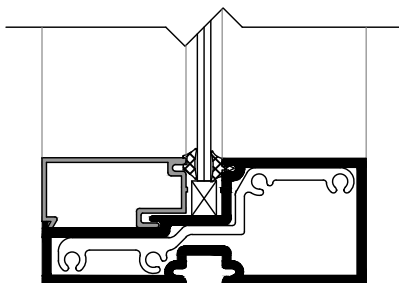
1A



2



4



3

*Clearly Exceptional*

Providing innovative solutions that meet client needs | [desa.ca](http://desa.ca)