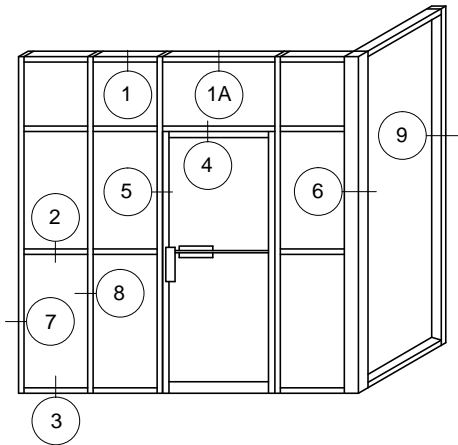
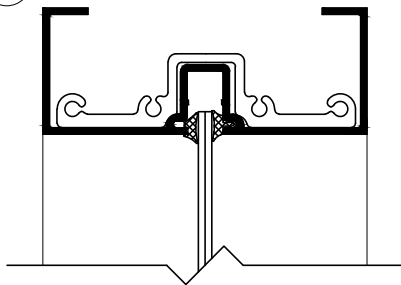


175 SERIES FLUSHLINE DETAILS

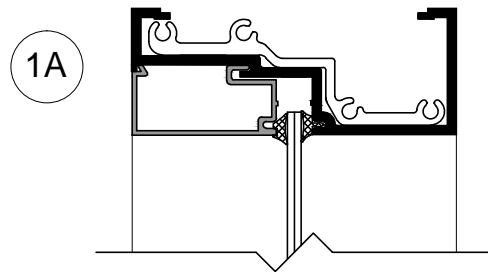
B2



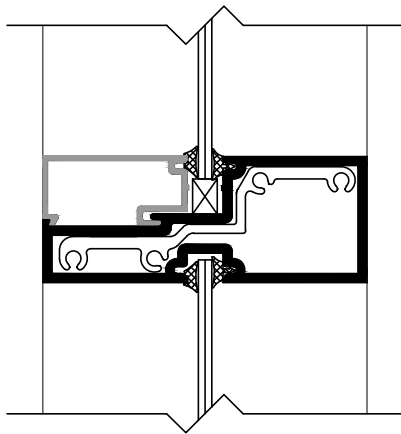
- 1 3/4" X 4 1/2" STOREFRONT AND ENTRANCE FRAMING SYSTEM FOR SINGLE GLAZING.
- OFFERS A NARROW 1 3/4" SIGHTLINE AND IS TOTALLY COMPATIBLE WITH THE DESA 100, 350 AND 500 SERIES ENTRANCE DOOR PACKAGES.
- THIS SYSTEM IS PRIMARILY USED FOR INTERIOR AND VESTIBULE CONDITIONS AND OFFERS A 90 DEGREE CORNER POST WHICH ALLOWS FOR EASY VESTIBULE DESIGN AND LAYOUT AT THE INTERIOR OF MAIN ENTRANCE AREAS.
- TUBULAR PROFILED EXTRUSIONS WITH SHEAR BLOCK JOINERY.
- CLEAR AND BRONZE ANODIZED FINISHES ARE STANDARD . OTHER FINISHES ARE OPTIONAL.



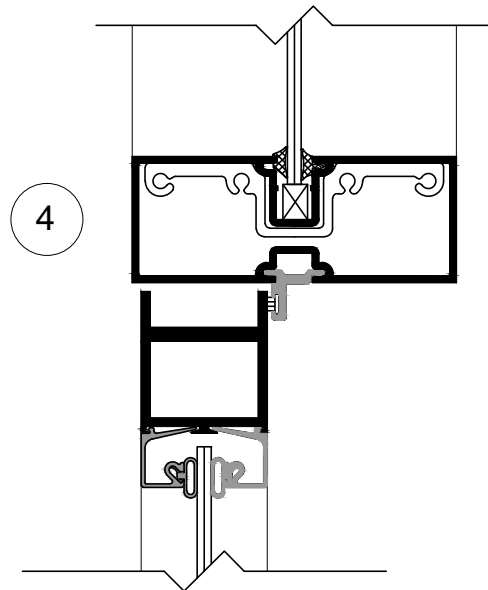
1



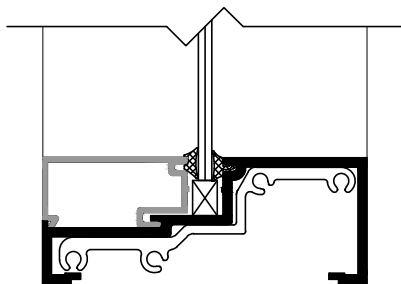
1A



2



4



3

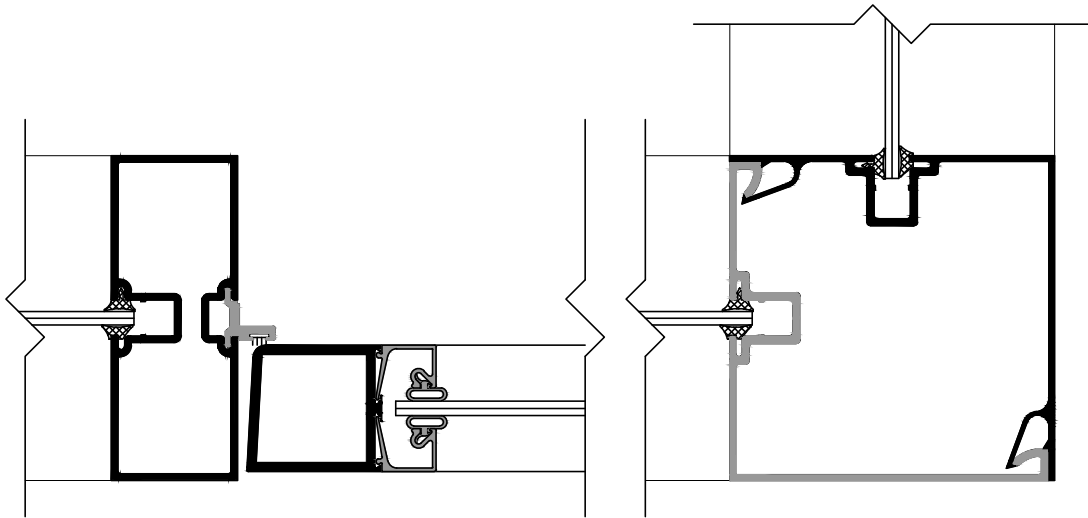
SCALE: 3/8" = 1"



providing innovative solutions that meet client needs.

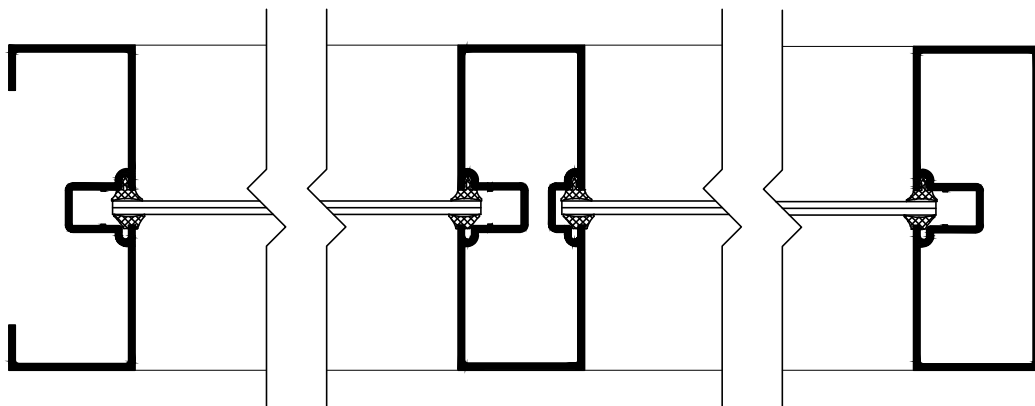
175 SERIES FLUSHLINE DETAILS

B3



5

6



7

8

9

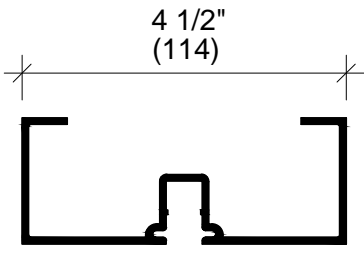
SCALE: 3/8" = 1"



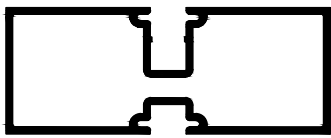
providing innovative solutions that meet client needs.

175 SERIES FLUSHLINE FRAMING PARTS

B4



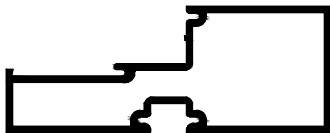
F1751
PERIMETER
HEAD - JAMB



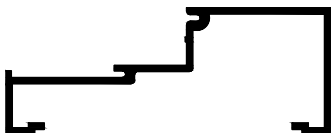
F1752
MULLION



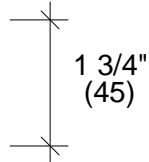
F1755
SILL STOP



F1753
HORIZONTAL



F1754
SILL



F1756
DOOR STOP



A13
SHEAR BLOCK



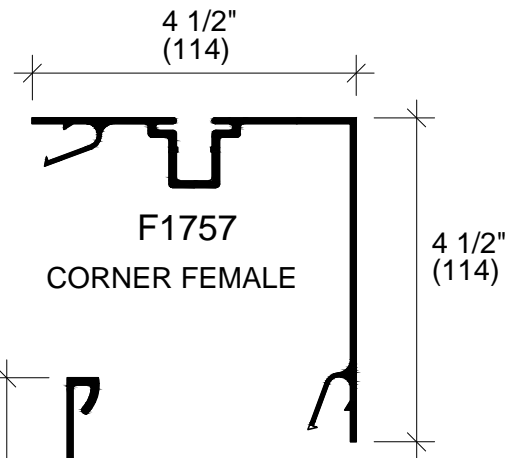
A12
SHEAR BLOCK



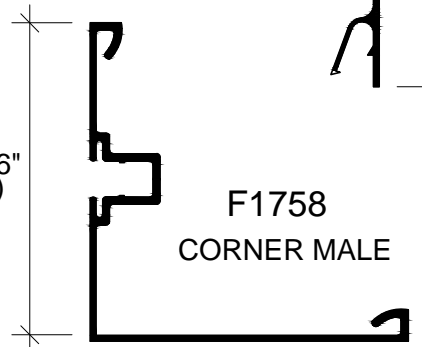
N213
FIXED GASKET



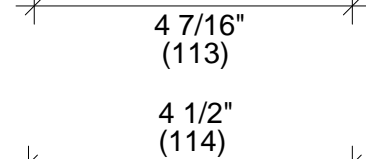
N215
FACE GASKET



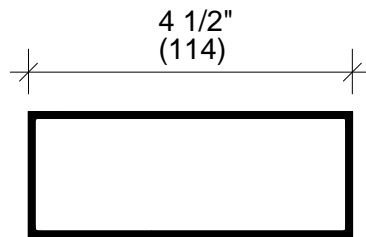
F1757
CORNER FEMALE



F1758
CORNER MALE



F1759
CLOSED BACK
HEAD - JAMB



D 407
CLOSED BACK
TUBE

SCALE: 3/8" = 1"



providing innovative solutions that meet client needs.